

A detailed painting of a kingfisher perched on a thick, gnarled tree branch. The bird is shown in profile, facing right, with its characteristic blue back and white underparts. The background features a flowing river with white water rapids, surrounded by lush green trees and a wooden bridge in the distance. The overall style is that of a classic landscape painting.

Backyard Wildlife

Trever Parker

Streamline Planning Consultants

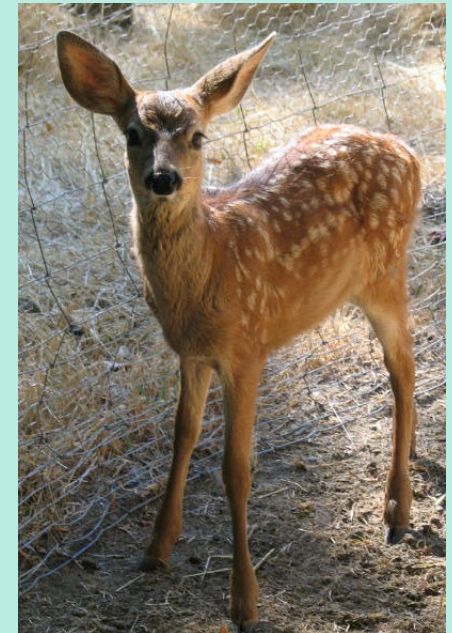
Credits

- Animal photos from Humboldt Wildlife Care Center volunteers
 - <http://www.humwild.org/>
- Artwork from local artist Linda Parkinson
 - http://www.natureartists.com/linda_parkinson.asp



Problems

- Loss of habitat
- Disconnection of habitat
- Invasive species
- Cats
- Cars
- Windows
- Guns
- Barbed wire
- Nest disturbance
- Electrocutation



Backyard Habitat



- Plants
- Water
- Cover
- Quiet
- Poisons / pesticides
- Planning ahead





Cats

- Saliva causes severe bacterial infections
- Keep inside if possible (safer for your pet)
- Have an enclosed outdoor area
- Keep in early morning and evening
- Feral cats

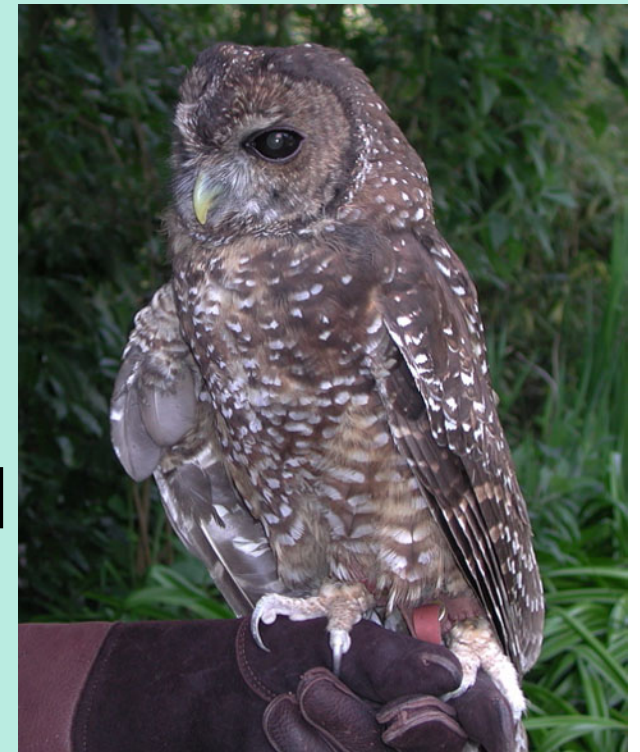




Cars



- Watch out particularly near dawn and dusk
- Do not throw trash out your windows
 - Even if its biodegradable
- If you see one animal – slow down, there may be more
- If you hit something, stop and check on it



Vegetation Management

- Do not cut vegetation between March and September
- Check for nests before cutting

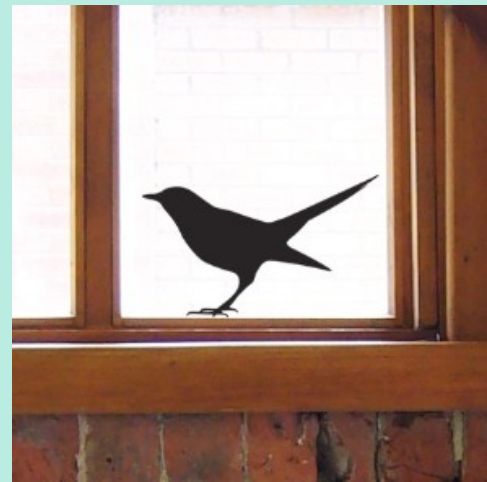




Windows



- Use care when placing bird feeders
- If it is a common occurrence, consider window decals, stringers, shades, etc.



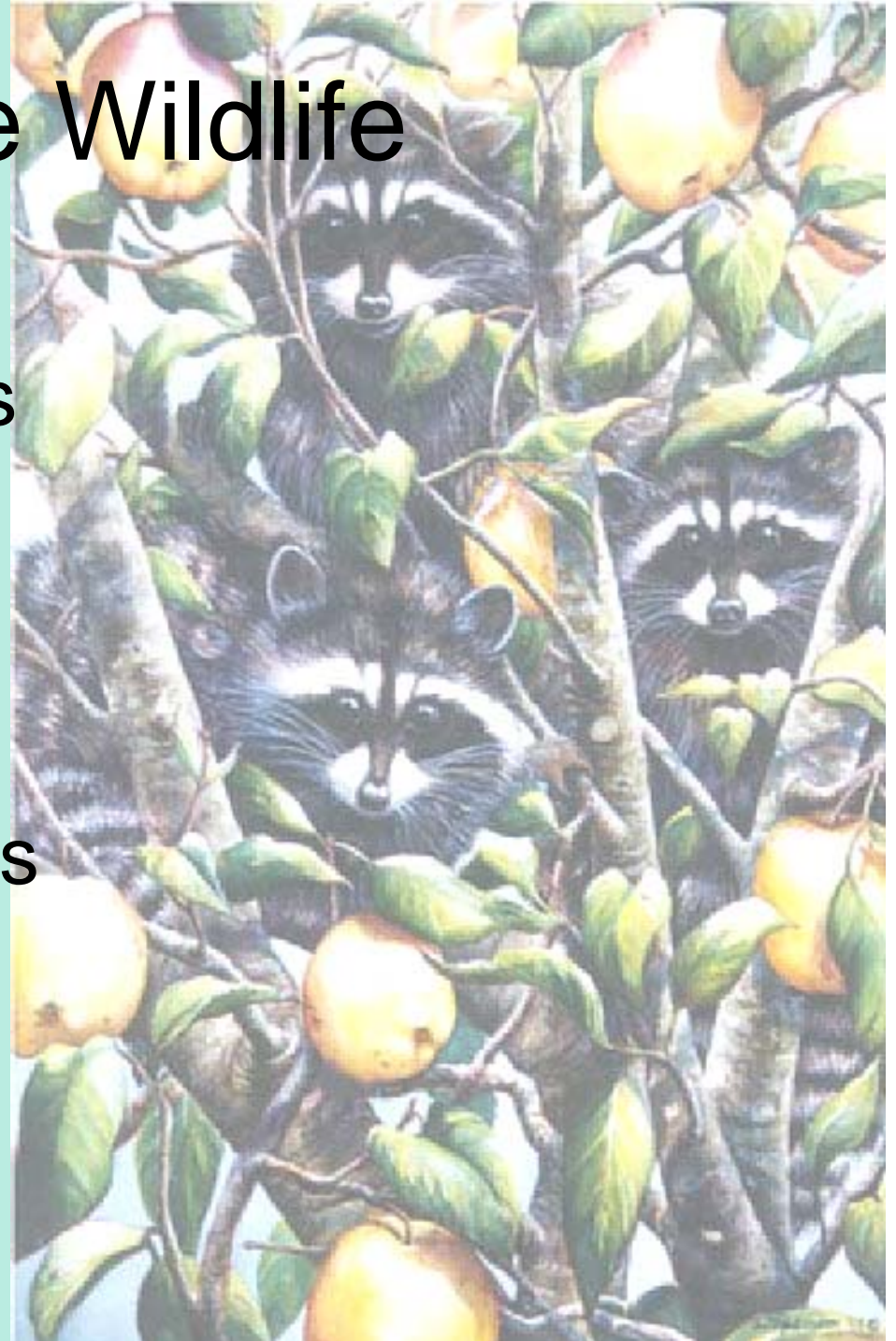
Backyard Farmer Pests

- Gardens
- Chickens
- Bees



Nuisance Wildlife

- Barring entry
- Removing attractants
- Repellants
- Poison
- Trapping
- Timing considerations



Baby Season

- March – September
- Vegetation management
- Demolition
- Nuisance animals
- Fallen nests
- Abandoned animals



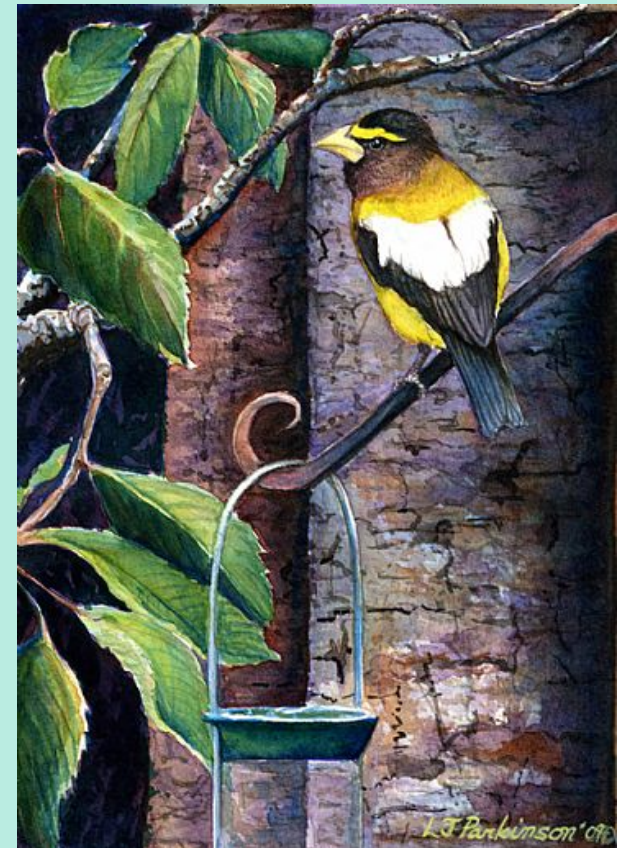
Benefits of Backyard Wildlife

- Pest control
 - Rodents
 - Insects
- Personal enjoyment
- Education / enrichment of children
- Knowing your backyard habitat is healthy



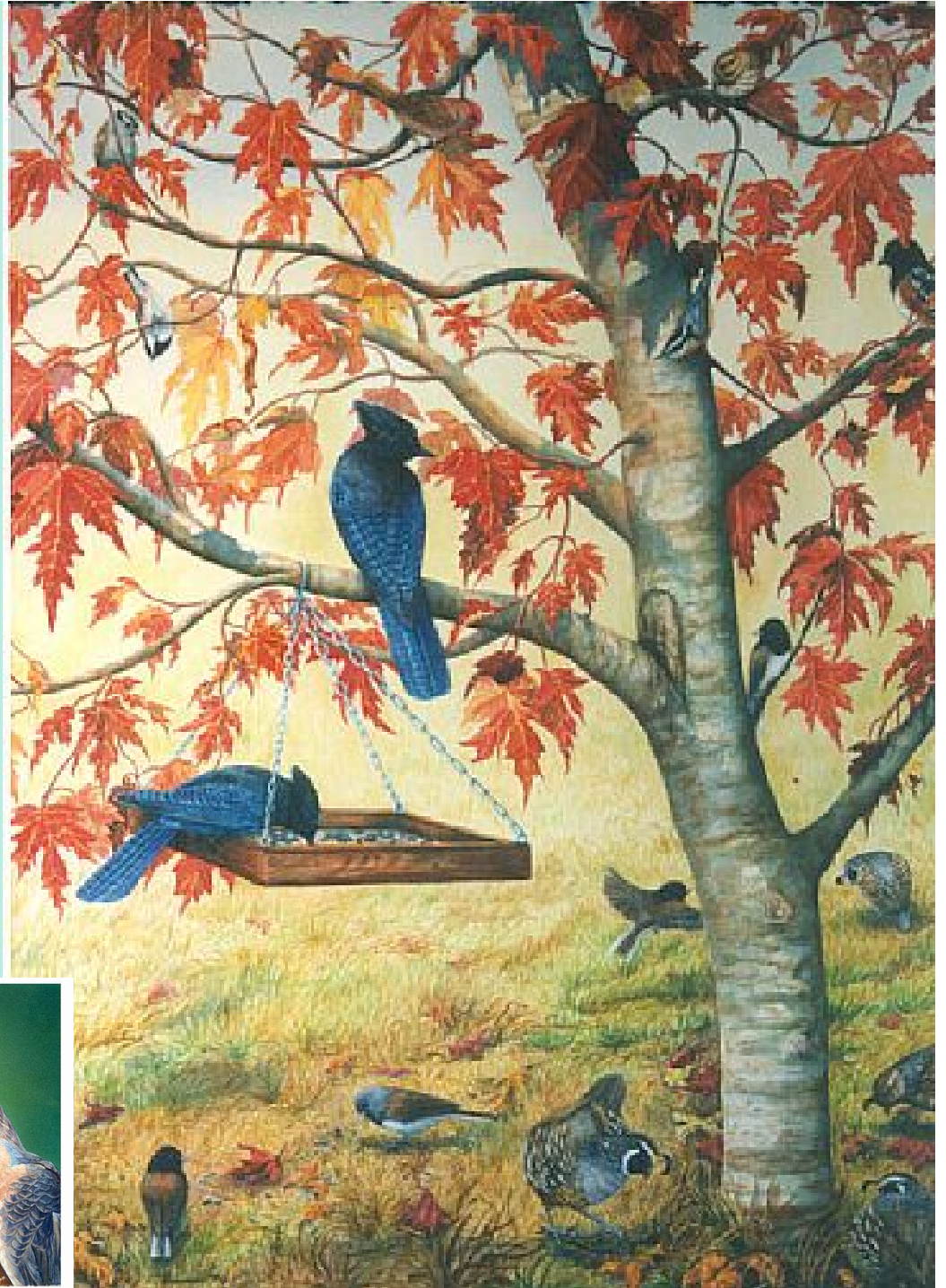
Encouraging Wildlife

- Birdfeeders
- Bird houses
- Bat boxes
- Habitat



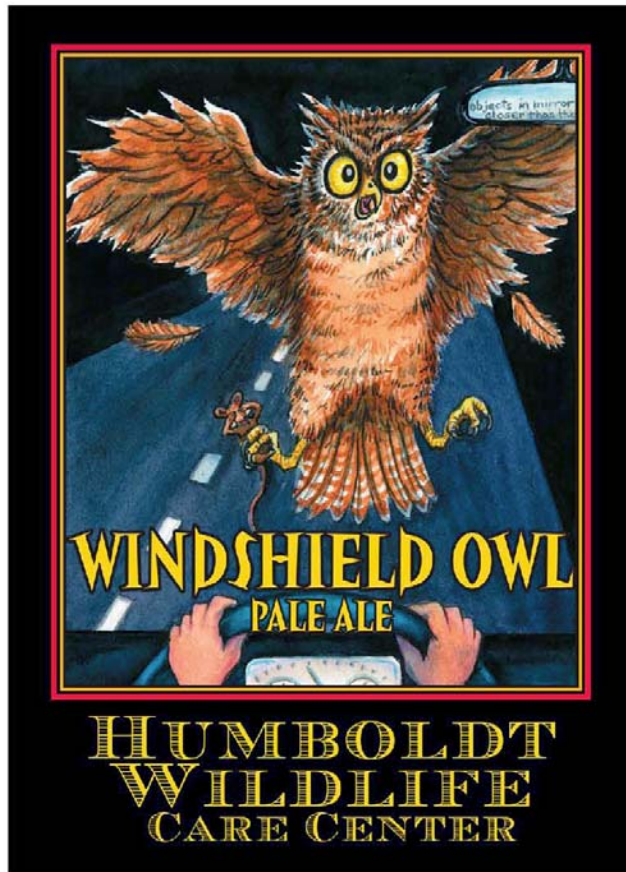
Birdfeeders

- Common species
- Food types
- Considerations
 - Cleaning
 - Predator access
 - Wildlife predators
- Hummers



Bird / Bat Boxes





ARCATA

Wildberries
Co-op
Murphy's
Arcata Liquors
4th St. Market
Hank's Coffee House

EUREKA

Co-op
Murphy's

McKINLEYVILLE

Cask & Flask Liquors

BLUE LAKE

Play Station 777@
Blue Lake Casino

FORTUNA

Beverage Plus Foods

FERNDALE

J & W Liquors

SCOTIA

Scotia Inn

* If you don't see our beer at
your favorite store, ask for it.

The Humboldt Wildlife Care Center and Lost Coast Brewery Proudly Presents Windshield Owl Pale Ale! The Lost Coast Brewery Makes a Generous Donation to the HWCC for Every Bottle Purchased. Help Us and Help Yourself to Their Classic Pale Ale, Now Benefiting HWCC. Cheers!

Thanks to Local Artist, Linda Parkinson, Bug Press, Humboldt Beer Distributors and, of Course, Lost Coast Brewery for Making This Project Possible.

Please Drink Responsibly. www.humwild.org